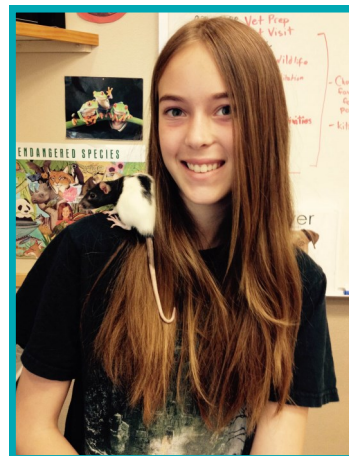


Animal Adventure Camp

Our goal: To nurture a sense of compassion and respect for living beings through enriching activities, educational curriculum, and hands-on experiences that are rewarding for kids and animals alike!

Camp Registration FAQs:

- **How do I sign up for camp?** Visit www.sdhumane.org to register and pay for your child online. Paper application available upon request.
- **Does camp fill up?** Yes, it does! To make sure your child can be enrolled, register your child early. Camp is filled on a first-come, first-served basis.
- **What are your locations?** All camps take place at our San Diego Campus located at 5500 Gaines Street in San Diego. We do not take field trips or travel to offsite locations.
- **Will campers get to take care of the animals?** Children will interact with animals each day! However, campers won't need to clean up after the critters...we leave that to our Animal Care experts. Encounters are planned with the animals' best interest in mind, hence we cannot guarantee any specific animal, but children will definitely get to interact with a variety of pets daily.
- **Can campers bring a friend?** Of course! Please list the friend's name on your application. All campers must be registered before attending camp. ***Please note: Although we will try our best to place friends together, placement in the same class with a friend cannot be guaranteed.***
- **What is the cost?** Spring, Winter and Summer Camps cost \$240 for the week (five, full days). Mini Camps cost \$50 for one day camps.
- **How will I know if I got into a session?** You will receive an **e-mail confirmation** with valuable information that you will need for camp.
- **What if I need to cancel?** Refunds for camp are available until the Friday before minus a \$20.00 processing fee.
- **Is there before and after camp care?** We offer extended care at our Spring and Summer camps only. For an \$80 flat fee, campers can be dropped off at 8:30am daily and picked up anytime from 3-5pm each evening. ***We cannot honor requests for an earlier drop off or later pick up time.***



Any questions?

Please contact the Education Department
(619) 299-7012 x2292/ edu@sdhumane.org

For more information, please visit our website!
www.sdhumane.org